

Verification statistics

observations WMO022221

experiment R34

Period + fc length: 200001+048

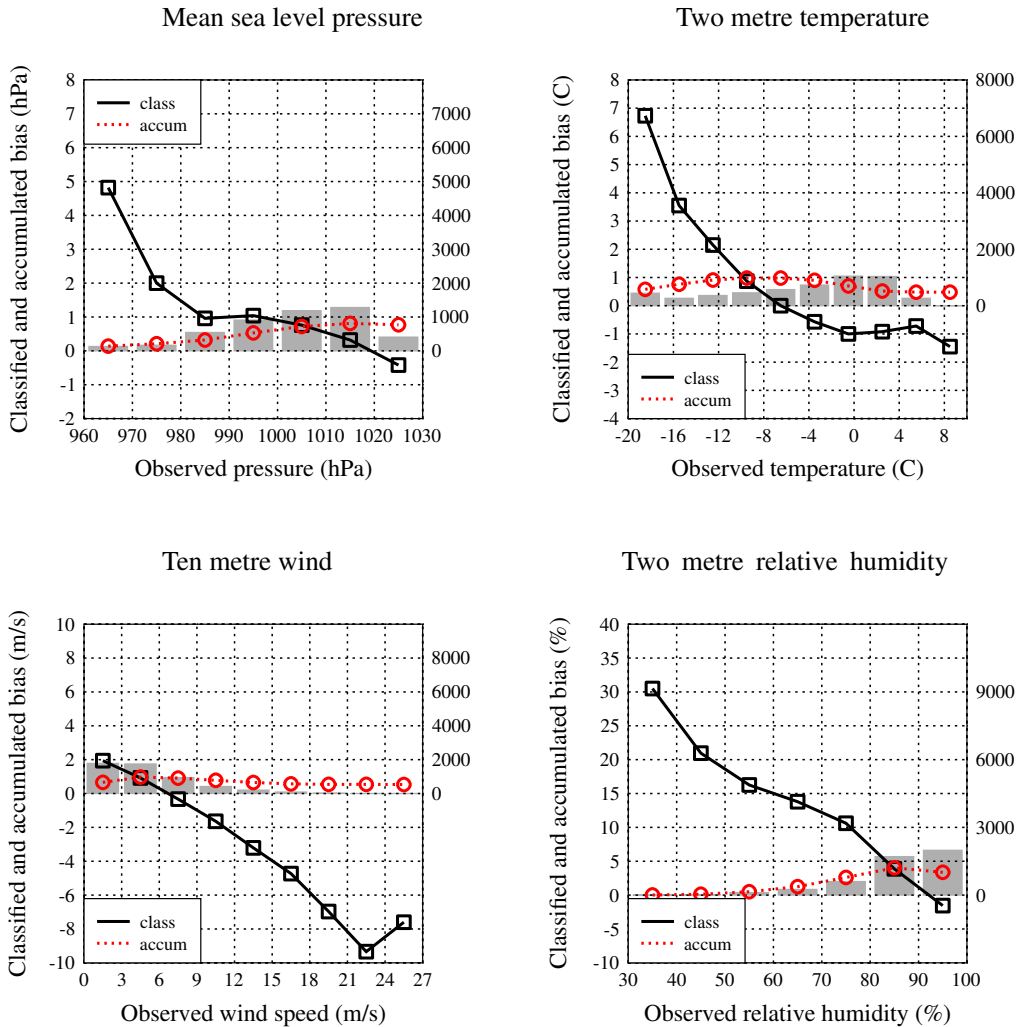


Figure 1: Systematic difference between predicted and observed (00 UTC + 48h forecast - 00 UTC observation) mean sea level pressure (hPa, upper panel left, left y-axis), temperature (K, upper panel right, left y-axis), ten-metre wind speed (ms^{-1} , lower panel left, left y-axis) and relative humidity (% , lower panel right, left y-axis) at the Swedish, Finnish and Northern Russian (WMO blocks 02,22,21) synoptic stations in January 2000, classified according to observed pressure, temperature, wind and relative humidity (x-axes), correspondingly. Number of observations in each class is shown by shaded bars (right y-axes). The lines with squares show the bias of each class. Lines with circles show the accumulated weighted contribution of the classes to the total bias of +48h forecasts, which value is thus shown by the rightmost circle of each line. Experiments R34 = 33 km resolution/40 levels in vertical, HIRLAM version essentially 6.3.5, analysed boundaries.